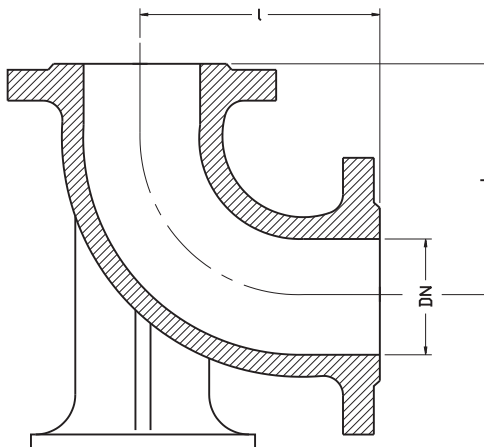
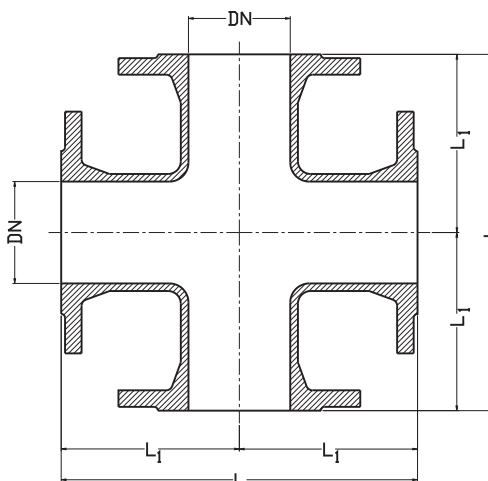


COT CU PICIOR SI FLANSE
Cast iron elbow Typ N
9202


DN	l	Masa
	[mm]	[kg]
80	165	13
100	180	17
150	220	29
200	260	46
250	350	73
300	400	104
400	500	177
500	600	281
600	700	425
800	900	860

CRUCE CU FLANSE
Flanged cross
9218


DN	L	L ₁	Masa
	[mm]		[kg]
100	320	160	25
150	400	200	45
200	450	225	62
250	600	300	104
300	680	340	145
400	900	450	215
500	900	450	305
600	1100	550	420

Date tehnice:

Flanse conform EN 1092-2: 1999
 Presiune de lucru PN10,PN16
 Executie conform EN 545: 2006.

Caracteristici constructive:

Corp-
 Fonta ductila GJS 500-7 EN 1563:2000
 Executie standard:
 vopsea epoxidica RAL5005 250 μm (*).

Aviz sanitar emis de PZH

Domenii de utilizare:

In instalatii de apa, apa potabila si alte fluide inerte.

Montaj:

Montajul se poate face in orice pozitie.

* - alte executii la cerere

Technical data:

flanges acc. EN 1092-2
 working pressure PN10,PN16
 version acc. EN 545: 2006

Design features:

Body-
 Nodular castiron GGG 50 DIN 1693
 Standard execution:
 epoxide paint RAL5005 250 μm (*).

Hygienic attest by PZH

Application:

In instalatii: for water, potable water and other inert fluids

Assembly:

Assembly from horizontal to vertical position.

*- other executions on request