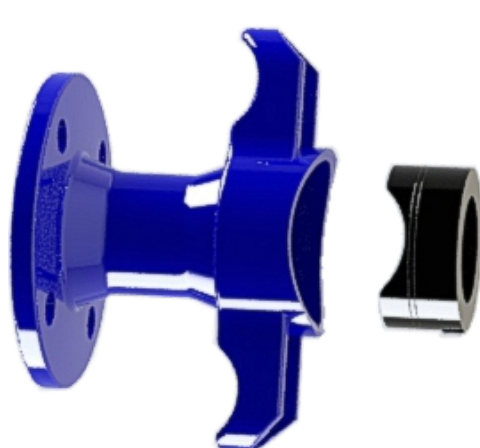
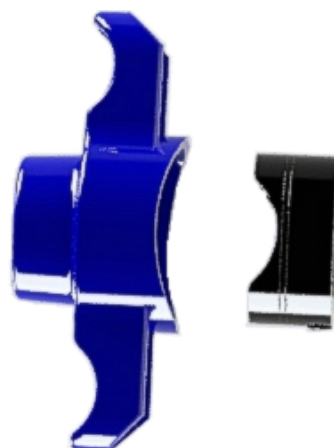


**Sa de bransare**
**Pn16**
**APA**


Sa de bransare 3050



Sa de bransare 3100

### Descrierea produsului:

- Pasaj integral
- Corp din fonta ductila EN-GJS 400-15
- Garnitura de etansare intre corp si conducta
- Garnitura profilata unidirectionala
- Conexiune filetata 2" conform EN 228-1. Presiune de lucru PN16 pentru DN50 (fig 3100)
- Flansa conform EN 1092-2 (DIN 2501) presiune PN16 (fig 3050)
- Protectie anticorozie prin acoperire cu pulbere epoxidica cu grosimea de minim 250 microni conform EN 14901, certificata RAL GSK
- Lungime de constructie conform fisa tehnica
- Marcare produs conform EN 19; EN 1074

### Domenii de utilizare:

In retele de apa potabila, canalizare si alte fluide inerte cu temperatura maxima +70°C si presiunea de lucru maxim 1.6 MPa

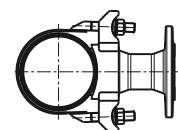
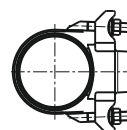
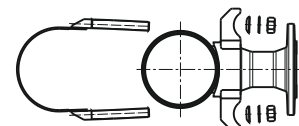
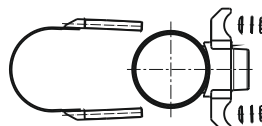
### Testare:

Testarea produsului se face conf. EN 1074-1; EN 1074-2; EN 12266-1  
 Rezistenta: 1,5 x PN

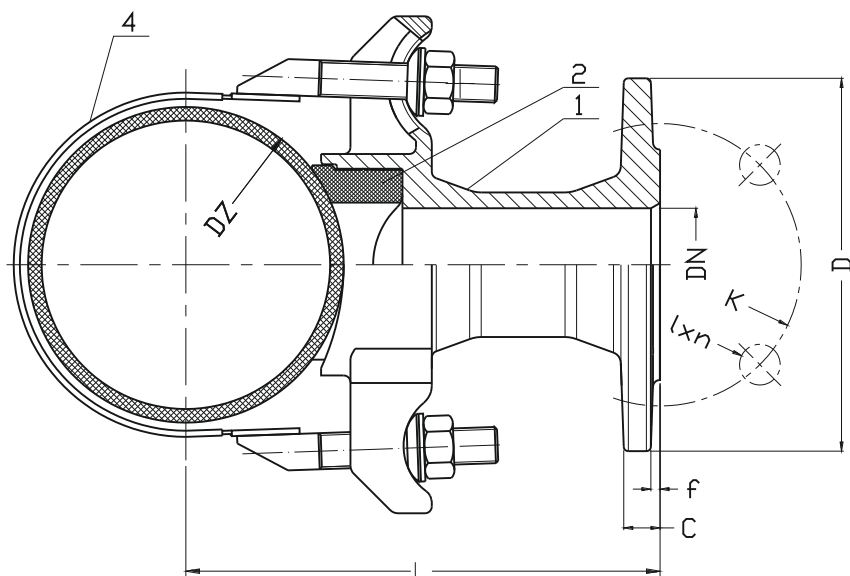
### Variante de executie

Fonta ductila EN-GJS 500-7

### Pozitii de montaj:



3050

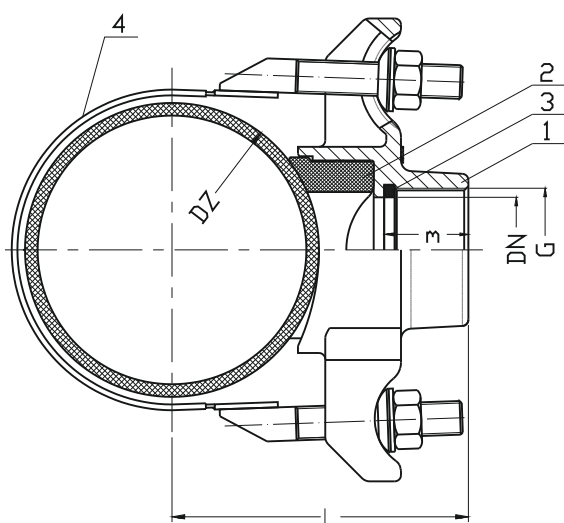


No.	Reper	Material
<b>3050, 3100</b>		
1	Corp	Fonta ductilă EN-GJS-400-15 EN 1563
2	Garnitura	Cauciuc EPDM ISO 1629
3	Garnitura	Cauciuc EPDM ISO 1629
<b>3330</b>		
4*	Clema montaj	Otel inoxidabil EN 10088-1 Cauciuc EPDM ISO 1629

\* - Produs disponibil impreuna sau separat  
- Alte variante de materiale la cerere

DN	K	Dz	D	I x n	L <sub>2</sub>	C	f	Nr. Cleme montaj - 3330
[mm]								[buc]
50	125	88-738	165	19x4	140+Dz/2	16	3	1
80	160	125-700	200	19x8	135+Dz/2	17	3	2
100	180	150-500	220	19x8	135+Dz/2	17	3	2
100	180	500-800	220	19x8	135+Dz/2	17	3	2
150	240	300-500	300	23x8	135+Dz/2	19	3	3
150	240	500-900	300	23x8	135+Dz/2	19	3	3

3100



DN	G	m	Dz	L <sub>1</sub>	Nr. cleme montaj 3330
[mm]	[cal]		[mm]		[buc]
50	2"	40	88-738	85+Dz/2	1

Ne rezervam dreptul de a modifica caracteristicile produselor in functie de evolutia tehnica.