

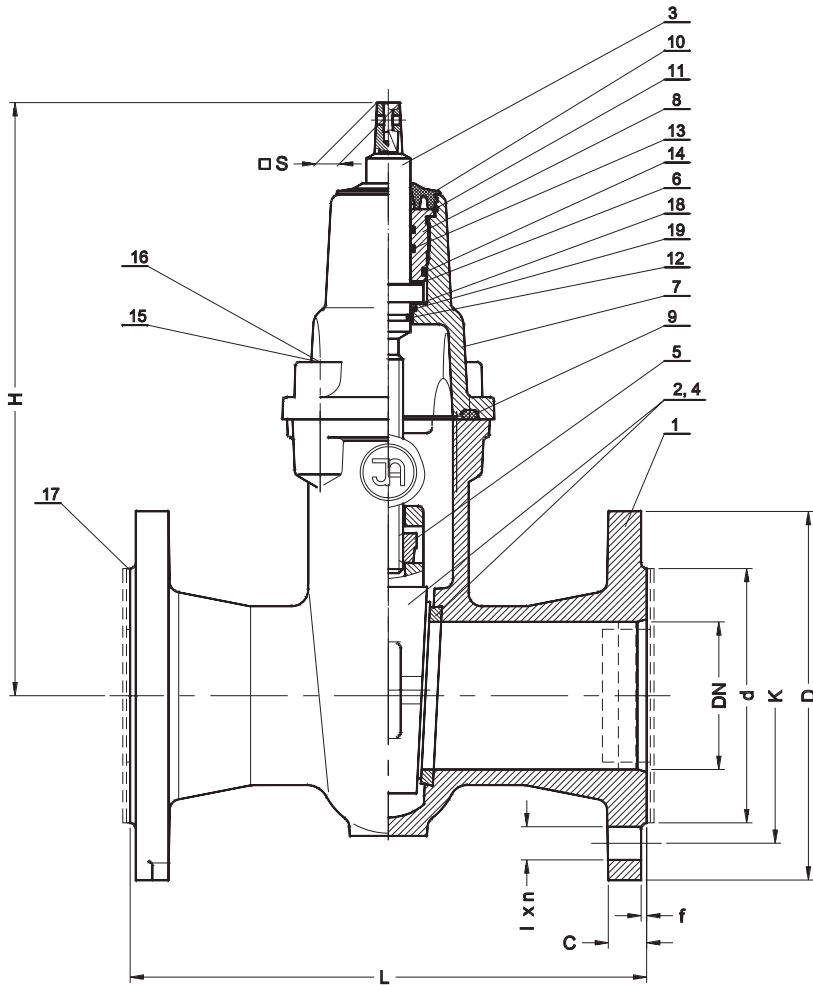
**Robinet cu sertar pana,
corp oval**

Wedge gate valve

Keilschieber



Date tehnice:	Technical data:	Technischdaten:
<p>Lungime de constructie DIN 3202 / EN 558-1 robinet cu sertar pana, corp oval 2113 - F 5 Flanse conform EN 1092-2 Clasa de etansare - A Presiune maxima de lucru PN 16 Temperatura maxima de lucru 120°C</p>	<p>Face to face length DIN 3202 / EN 558-1 gate valve 2113 - F5 Flanges / drilled acc. EN 1092-2 Leakproofness class - A Working pressure max. PN 16 Working temperature max. 120°C</p>	<p>Bebaungslänge DIN 3202 / EN 558-1 Keilschieber 2113 - F5 Flanschanschluß/bohrung EN 1092-2 Dichtheitsklasse - A Arbeitdruck max. PN 16 Arbeittemperatur max. 120°C</p>
Caracteristici de constructie:	Design features:	Baucharakteristik:
<p>Inelele de etansare ale tijeii (o-ring) pot fi schimbate fara a scoate robinetul din instalatie. Tija robinetului este din otel inoxidabil. Piulita tijeii poate fi inlocuita.</p> <p>Toate partile componente sunt protejate impotriva corozionii. Executie standard: PN16, 120°C, EPDM, inele etansare din alama Vopsea polivinilica RAL 7005 100 µm.</p> <p><i>Certificat CE</i></p>	<p>O-ring spindle's gaskets - "DRY THREAD" - replaceable under pressure. Stainless steel bearing spindle with rolling thread. Replaceable spindle nut.</p> <p>All parts are protected against corrosion</p> <p>Standard execution: PN16, 120°C, EPDM, rings of brass polyvinyl paint RAL 7005 100 µm.</p> <p><i>Certificate CE</i></p>	<p>O-Ring Spindeldichtung - "Trocken Gewinde" - mit Unterdruckwechselfähigkeit gemacht. Niros-Stahl lageren Spindel mit Walzengewinde. Auswechselbar Spindelmutter.</p> <p>Alle Teile sind gegen Korrosion schützen</p> <p>Standardausführung: PN16, 120°C, EPDM, Ringe aus Messing Polyvinylemailfarbe RAL7005 100 µm.</p> <p><i>Zertifikat CE</i></p>
Domenii de utilizare:	Application:	Anwendung:
<p>In instalatii de apa, si alte fluide.</p>	<p>In installations for water and other inert fluids to flow closing.</p>	<p>In Wasserlinnen und andere neutrale Flußigkeitenlinnen zu Fluß verriegeln</p>
Montaj:	Assembly:	Aufstellung:
<p>Montajul se face in pozitie orizontala sau verticala.</p>	<p>Assembly in optional position.</p>	<p>Aufstellung im beliebig Position.</p>



No.	Reper	Material
1	Corp,	EN-GJL-250, SR-EN 1561:2000
	Body,	EN-GJS-400-15, SR-EN-1563:2000
	Gehäuse	GG25 - DIN 1691, GGG40 - DIN 1693
2	Sertar,	EN-GJL-250, SR-EN 1561:2000
	Wedge, Keil	EN-GJS-400-15, SR-EN-1563:2000 GG25 - DIN 1691, GGG40 - DIN 1693
3	Tija,	Otel inoxidabil X20Cr13
	Spindle, Spindel	PN-EN 10088-1:1998 Steel, Stahl DIN 1.4021
4	Inele etansare,	Aliaj cupru, brass, Messing DIN 17660
	Ring, Ring	
5	Piulita tijej,	Aliaj cupru, brass, Messing DIN 17660
	Spindle nut, Spindelmutter	
6	Saiba tija, Spindle washer, Spindelscheibe	Teflon (Tarflen)
7	Capac,	EN-GJL-250, SR-EN 1561:2000
	Bonnet, Deckel	EN-GJS-400-15, SR-EN-1563:2000 GG25 - DIN 1691, GGG40 - DIN 1693
8	Bucsa tija, Packing cork, Dichtungskork	Aliaj cupru, brass, Messing DIN 17660
9	Garnitura corp-capac, Bonnet gasket , Dichtung	Cauciuc, Rubber, Gummi EPDM
10	Garnitura antipraf, Clean gasket, Putzendichtung	Cauciuc, Rubber, Gummi EPDM
11	Inel opritor, Stopper ring, Sicherungring	Otel, Steel, Stahl 65G
12-14	Inele etansare (O-Ring), Seal O-Ring, Dicht-O-Ring	Cauciuc, Rubber, Gummi EPDM
15	Organe asamblare, Screw , Schraube	Otel Fe/Zn5, otel zincat SR-EN ISO 4762:2001
16	Protectie organe asamblare, Screw stopper,	Parafina Paraffin
17	Capac protectie, Stopper, Blende	Polipropilena Polypropylene
18	Saiba tija, Spindle sleeve, Spindelhulse	Teflon (Tarflen)
19	Inele etansare (O-Ring), Seal O-Ring, Dicht-O-Ring	Cauciuc, Rubber, Gummi EPDM

DN	L F 5	H	d	D	K 16 (10) Bar	I 16 (10) Bar	C	f	n 16 (10) Bar	Filet tija L.H Thread d links	□S	Masa Weight Gewicht
[mm]											[mm]	[kg]
40	240	230	88	150	110	18	18	3	4	Tr 16 x4	14	11.8
50	250	250	102	165	125	18	20	3	4	Tr 16 x4	14	13.2
65	270	285	122	185	145	18	20	3	4	Tr 16 x4	17	17.0
80	280	330	138	200	160	18	22	3	8 (4)	Tr 16 x4	17	23.8
100	300	360	158	220	180	18	24	3	8	Tr 20 x4	19	31.0
125	325	400	188	250	210	18	26	3	8	Tr 24 x5	19	43.3
150	350	455	212	285	240	22	26	3	8	Tr 24 x5	19	57.9
200	400	520	268	340	295	22	30	3	12 (8)	Tr 24 x5	24	89.8
250	450	635	320	405	355 (350)	26 (22)	32	3	12	Tr 32 x6	27	135
300	500	715	370	460	410 (400)	26 (22)	32	4	12	Tr 32 x6	27	163